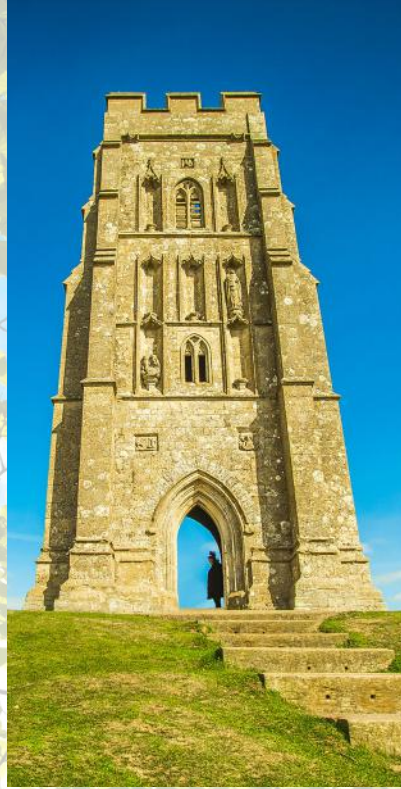


Woodlands Farmhouse

— *The Experience* —



Part of the  **WOODLANDS** Collection
— RETREATS —

In a quiet corner of rural
Somerset
a charming **country chic**
retreat awaits.....

Practical yet *stylish* spaces
like the *large, bespoke* kitchen-diner
at the *heart* of the house,
combined with *original features*
including **inglenook** fireplaces
& *authentic flagstone flooring*
create a property *bursting* with
heritage & charm



— Indulge & Escape —

Commanding attention from its slightly elevated position; Woodlands Farmhouse stands proud, surrounded by the beautiful Somerset countryside with stunning views of Glastonbury Tor. This is a property with character and heritage, grade II listed with original features beautifully complimenting modern upgrades from a complete renovation.

With seven luxurious bedrooms to choose from, deciding where to wake up could be the toughest decision of your stay. Will you choose the majestic four poster bedroom, the comfortable twin with vintage elm floorboards or the impressive master bedroom complete with striking open plan bathroom?

With the Sedum Spa (exclusively available for use by our guests) just a stone's throw away, making time for a welcome pamper session has never been easier. Use of the Spa is included throughout the duration of your stay and a variety of treatments are available to pre-book. Perhaps treat yourself to a Swedish Back, Neck & Shoulder Massage or an Essie Pedicure?

The nearby Red Lion at West Pennard is a great place to sample some local ales or stop for a bite to eat if you fancy a break from cooking. And for the perfect end to a perfect day... sit back and relax with a good book and warm open fire in the library, curl up and enjoy a film on the 50" Plasma TV in the cinema room, or simply sink into the soothing bubbles of your own private Hot Tub, surrounded by the gentle glow of the uplighters while you admire the beautiful Somerset skies by night.

“WOW! the only
word
to sum up this
great place”

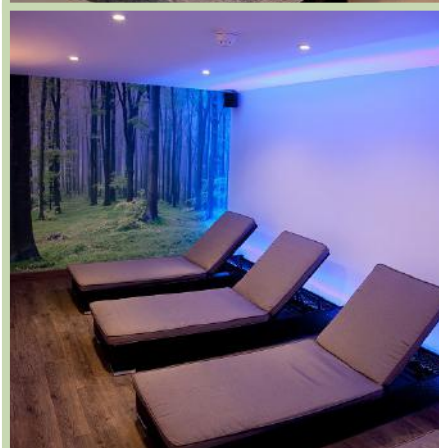


—The Sedum Spa—

- 12x5m heated indoor pool with thermodynamic solar panels heating the water and air
- Lounging area surrounding the pool
- Sauna
- Nordic Outdoor Hot Tub
- Gym facilities with CV machines, free weights and cable machines
- 4 treatment rooms with a wide range of therapies available
- Relaxation room with gentle music & lighting to ease all your troubles away
- Separate male & female changing facilities
- Spectacular views of Glastonbury Tor from the Pool and Hot Tub

Located on the same site as Woodlands Farmhouse, the Sedum Spa brings the hotel Spa experience to the self-catering sector, providing guests with the opportunity to truly relax and unwind. Use of the Spa is included in the cost of your accommodation and a variety of treatments can also be pre-booked as part of your stay. Payment for treatments is required in full at the time of booking.

Groups of more than 4 people are required to pre-book 2 hour Spa slots to use the facilities. Not for exclusive use



— Celebrate and Discover —

Sleeping up to 16 people, Woodlands Farmhouse is all encompassing, designed for celebrating and socialising.

A *relaxing* retreat
a sophisticated **HEN** party
a 60th birthday celebration
a **w e e k e n d**
getaway

The stunning *bespoke kitchen - diner* is the heart of this property, allowing guests to *cook, chat and dine together* in *rustic luxury* beside the 3 oven aga and original flagstone flooring. For an Al Fresco celebration, the *practical yet cosy courtyard* perfectly combines the *Games Room, Hot Tub, BBQ and outside dining area*, providing the ideal space for outdoor entertaining, in a *stunning rural location* with views of Glastonbury Tor.





— Find & Explore —

With its quiet, sleepy location, Woodlands Farmhouse is the perfect escape from the hustle and bustle of everyday life...yet surprisingly, it's ideally located to discover a huge variety of Somerset's best days out.



Wells Cathedral

Somerset is full of natural wonders and history. Famous for its festival and alternative nature, nearby **Glastonbury** is an experience like no other. Magical shops, original musicians and interesting cafes fill the town, as do the fascinating legends of King Arthur, believed to rest in the grounds of the **Abbey**. Whispers of mystery and magic also surround iconic **Glastonbury Tor** with its breathtaking 360° views; well worth the short uphill walk to reach the top.

Clark's Village provides a unique opportunity to relax, dine and shop, boasting over 90 designer and high street brands with up to 60% off every day prices. Reknowned for the Roman Baths and just a 45 minute drive from the property, the bustling city of **Bath** is another popular shopping destination, filled with beautiful architecture and street performers.

Nestled at the foot of the Mendip Hills and famed for its medieval architecture, nearby **Wells** is England's smallest city, home to The Bishops Palace and stunning Wells Cathedral. Slightly further away the town of **Cheddar** offers a variety of quaint shops, authentic Cheddar cheese and of course, an incredible **Gorge**. To really experience its beauty, an open top bus ride is a must.

Approximately 45 minutes away from the property, **Longleat Safari Park** provides a unique and exciting day out for the whole family. Drive amongst Lions, Rhinos, Giraffes and Monkey's to name a few, before exploring the magnificent house and grounds. You can also make savings by pre-buying tickets in advance through the Longleat website.



Longleat Safari Park



Fleet Air Arm Museum

Two of the best museums the area has to offer are **Fleet Air Arm Museum** and **Haynes International Motor Museum**, both located along the A37 towards Yeovil. The naval air museum can be found at RNAS Yeovilton and is Europe's largest naval aircraft museum with flight simulators and much naval history to be explored. Haynes Motor Museum has a large selection of exotic, vintage and super cars on show, perfect for enthusiasts of all ages.



— Activities —

At Woodlands Retreats, we appreciate that party planning can be stressful, especially for larger groups. Let us take the stress away by organising your activities for you. From relaxing Spa treatments at our very own Sedum Spa to Clay Shooting, Private Dining to Inflatable Disco's and Bungee Runs....we're confident our activities offer something for everyone.

“We were *impressed* by the the **WIDE** range of activities available to book”

All activities are subject to availability and require a 25% deposit at the time of booking. Below are a selection of our more popular activities and guide costs. All prices are subject to change and dependent upon service provider availability. A full list of available activities can be found on our website www.woodlandsretreats.co.uk

Private Dining	£45 - £55pp (+£65 table service)
Clay Shooting	£35 - £45pp
Afternoon Tea	£25pp
Cocktail Class	£35pp for 2 hours
Assault Course	£300 all day
Cupcake Making	£35 - £40pp
Spa Treatments	£35 (25 min) £60 (55 min)

Woodlands Farmhouse

— *What's Included* —

Everything at the house is included on a self catering basis such as all electric & utility costs. We supply a small selection of basic household items such as toilet rolls and coffee to get you started, but you may need to bring some of the below with you if you have a large group.

Essentials

Bed Linen, Soap, Shower Gel

2 x Towels per person (1 x Large Towel & 1 x Small Towel)

2 x Toilet Rolls per bathroom

Tea, Coffee, Sugar, Salt and Pepper (enough to get you started)

Cleaning products, Dishwasher Tablets, Washing Up Liquid

Tea Towels and Bin Bags

1 x Kitchen Roll

Kitchen

The Kitchen is fully equipped with; Pots & Pans, Frying Pans, Cooking Trays, Serving Dishes, Plates, Crockery, Knives & Forks, Glasses (Wine, Tumblers & Champagne) for the capacity of Woodlands Farmhouse, Food Processor, Scales, Rolling Pin, Jugs, Cheese Grater and much more. All the basics will be there, but if you require anything specialist you may need to bring this with you.

Extras

Private Hot Tub

Welcome gift of local Ciders on arrival

1 x Charcoal Barbecue (charcoal not provided, we recommend easy light bags)

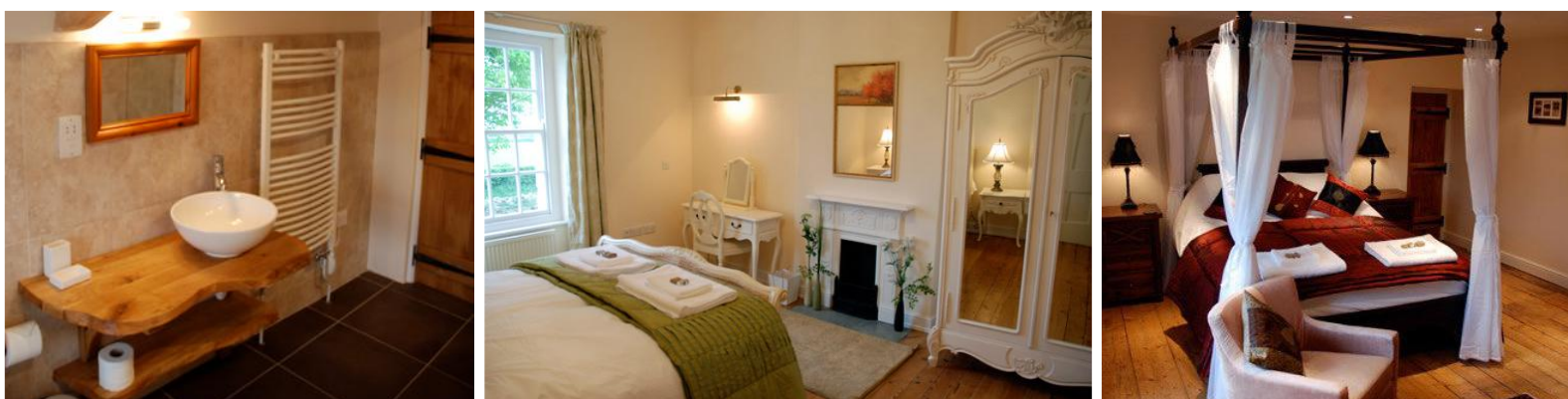
WiFi and Sky+ complete with Movies and Sports (not BT Sport)

2 x Log Burners with 2 baskets of logs and kindling provided

Sunday checkout of up to 4pm, 10am all other days

Use of the Sedum Spa is also included in the cost of the accommodation

All treatments booked are an additional cost.



Dining

Eating in or eating out, Woodlands Farmhouse is just a short distance from a variety of restaurants, pubs, takeaways and supermarkets.

Pubs & Restaurants

The Red Lion at West Pennard 1.5 miles from Woodlands Farmhouse
Local ales and home cooked food for lunch and dinner.
www.thelionatpennard.co.uk 01458 832941

BocaBar, Glastonbury 5 miles from Woodlands Farmhouse
A cosy and relaxed venue with regular live music - perfect for dinner or drinks.
www.glastonbury.bocabar.co.uk 01458 440558

Tamburino's, Street 6 miles from Woodlands Farmhouse
Authentic Italian cuisine in a Mediterranean setting. Booking advised.
www.tamburino.co.uk 01458 447570

The Red Lion at Babcary 7 miles from Woodlands Farmhouse
Award winning Somerset pub serving a mix of gastro dishes along with pub classics.
www.redlionbabcary.co.uk 01458 223230

The Sheppey, Nr Godney 9 miles from Woodlands Farmhouse
In the heart of the Somerset Levels, you'll find modern European food, an eclectic mix of musicians and a constantly changing roster of beers, ales and local ciders.
www.thesheppey.co.uk 01458 831594

Takeaways

The Tor Takeaway, Glastonbury 01458 831268
Oriental Chef, Glastonbury 01458 835219
Knights Fish, Glastonbury 01458 831882
Ocean House, Street 01458 446429

Supermarkets

Morrisons, Glastonbury 5 miles from Woodlands Farmhouse
Tesco, Glastonbury 6 miles from Woodlands Farmhouse
Aldi, Glastonbury 7 miles from Woodlands Farmhouse
Sainsbury's, Street 8 miles from Woodlands Farmhouse